

The Adams & Westlake Company

New York

CHICAGO

Philadelphia

THE efficiency of a Semaphore lamp depends on its ventilation. The lamp must not only burn under very difficult conditions, — subjected to wind pressure and to cold, — but it must burn brilliantly, and without fogging.

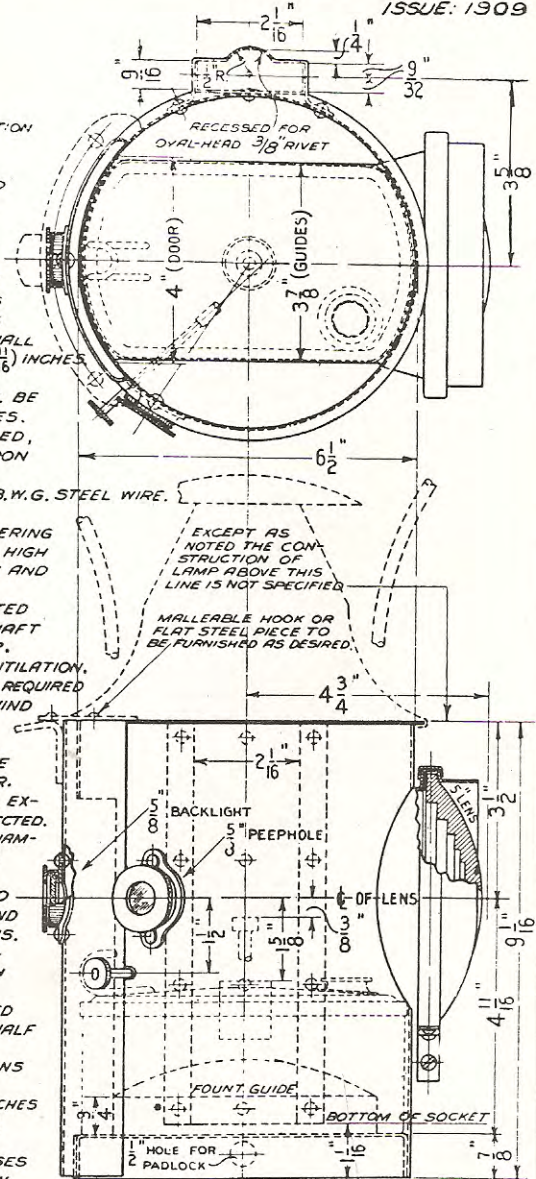
¶ Such requirements can only be met by a lamp equipped with the Adlake Non-Sweating Balanced Draught system of ventilation.

¶ Years of study and test have developed the system of ventilation which The Adams & Westlake Company use in this lamp. Adlake ventilation is the distinctive feature of all their lamps.

¶ Adlake ventilation marks the division between lamps that give maximum signaling efficiency and those that give less.

SPECIFICATIONS

- 1 BODY OF LAMP SHALL BE MADE OF NO. 18 SHEET STEEL TINNED.
- 2 BODY OF LAMP SHALL BE SIX AND ONE-HALF (6½) INCHES IN DIAMETER.
- 3 RIVETS SHALL BE USED IN CONSTRUCTION OF THE BODY OF THE LAMP FOR HOLDING PARTS TOGETHER.
- 4 DISTANCE FROM CENTRE OF LAMP TO OUTSIDE OF LENS, OR LENS SHIELD, SHALL BE NOT MORE THAN FOUR AND THREE-FOURTHS (4¾) INCHES.
- 5 DISTANCE FROM CENTRE OF LENS TO BASE OF LAMP SHALL BE FIVE AND NINE-SIXTEENTHS (5⅙) INCHES.
- 6 DISTANCE FROM CENTRE OF LENS TO BOTTOM SUPPORT OF FOUNT SHALL BE FOUR AND ELEVEN-SIXTEENTHS (4⅙) INCHES.
- 7 DISTANCE FROM CENTRE OF LAMP TO CENTRE OF LAMP SOCKET SHALL BE THREE AND FIVE-EIGHTHS (3⅝) INCHES.
- 8 EARS OR BAIL HOOKS, WHEN USED, SHALL BE MADE OF MALLEABLE IRON RIVETED TO BODY OF LAMP.
- 9 HANDLE OF LAMP SHALL BE NO. 4 B.Y.G. STEEL WIRE.
- 10 DOOR SHALL HAVE WATER-SHED SO ARRANGED AS TO PREVENT RAIN ENTERING THE LAMP, AND DOOR SHALL RAISE HIGH ENOUGH TO MAKE THE OPENING SIX AND FIVE-EIGHTHS (6⅝) INCHES.
- 11 LAMP SHALL BE SO CONSTRUCTED THAT THE WICK ADJUSTMENT SHAFT EXTENDS THROUGH BODY OF LAMP.
- 12 LAMP SHALL HAVE TOP DRAUGHT VENTILATION. (VENTILATION WILL BE TESTED WHEN REQUIRED AT THE FACTORY AS FOLLOWS. (A) WIND VELOCITY EQUIVALENT TO EIGHTY (80) M.P.H. FOR TWO (2) MINUTES. (B) STILL AIR-TEMPERATURE ONE HUNDRED AND TEN (110) DEGREES FAHR. FOR TWO (2) HOURS, IF ABOVE TESTS EXTINGUISHES FLAME LAMP WILL BE REJECTED.
- 13 LENS SHALL BE FIVE (5) INCHES IN DIAMETER WITH THREE AND ONE-HALF (3½) INCH FOCUS.
- 14 LENS HOLDER SHALL BE ARRANGED SO THAT LENS CAN BE EASILY REMOVED AND SHALL COMPLETELY ENCIRCLE THE LENS.
- 15 LAMP SHALL BE PROVIDED WITH FIVE-EIGHTHS (⅝) INCH BACK-LIGHT WITH ONE (1) INCH SCREW CAP.
- 16 SOCKET OF LAMP SHALL BE ARRANGED TO RECEIVE A LAMP BRACKET ONE-HALF BY TWO (½ x 2) INCH DIMENSIONS. SOCKET NOT TO EXCEED THE DIMENSIONS OF BRACKET MORE THAN ONE-SIXTEENTH (⅙) INCH AND BE EIGHT (8) INCHES IN DEPTH, RECESSED FOR (OVAL-HEAD) THREE-EIGHTHS (⅜) INCH RIVET.
- 17 BACK-LIGHT AND PEEP-HOLE GLASSES SHALL BE HELD IN PLACE BY SCREW RETAINING RINGS.
- 18 INSECT SCREEN SHALL BE PROVIDED WHEN SPECIFIED.



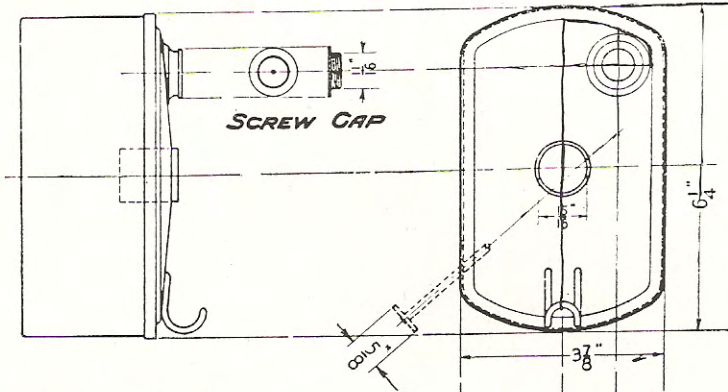
SEMAPHORE LAMP
R. S. A.

SUB - COMMITTEE NO. 1.

№1100B

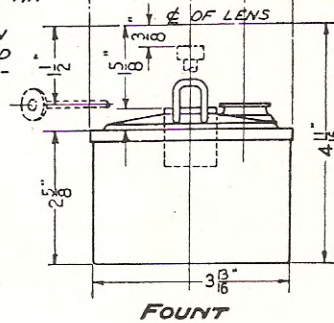
W.A.K.7-11-10

ISSUE 1909



SPECIFICATIONS

- 1 FOUNT SHALL BE THIRTY ONE (31) FLUID OUNCE CAPACITY AND FITTED WITH A SLIP COLLAR FIFTEEN-SIXTEENTHS ($\frac{15}{16}$) OF AN INCH IN DIAMETER
- 2 FOUNT SHALL BE MADE OF NO 22 DRAWN SHEET STEEL TINNED, AND BODY PRESSED OUT OF ONE PIECE AND WITH TOP SOLDERED ON.
- 3 LONG TIME BURNER SHALL BE USED.



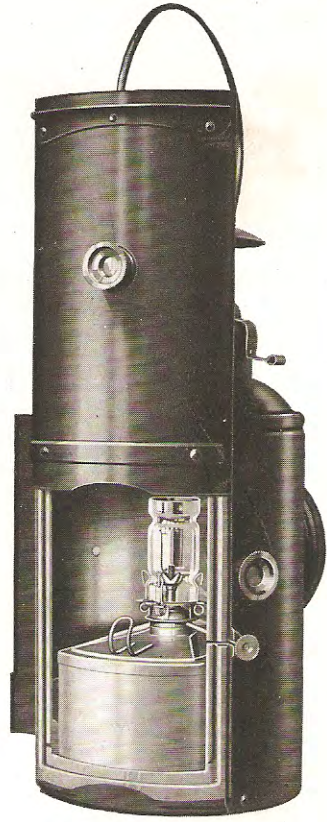
LAMP EQUIPMENT
RAILWAY SIGNAL ASSOCIATION
SUB-COMMITTEE NO. 1.

N21101

WAJ 12-30-09



FRONT VIEW



BACK VIEW

No. 180 SEMAPHORE LAMP

This lamp more than satisfies the requirement of the Railway Signal Association, as will be seen by reference to pages 2 and 3 of this Bulletin. The perfect ventilation of this lamp, upon which depends its efficiency, is the result of years of development and test, under actual conditions of service.

Among the advantages offered by this lamp are:

Rigid Serviceable Structure.

Full Brilliant Flame.

Convenient adjustment of Flame from outside.

Long time Burner.

Perfect Ventilation.

Ability to withstand any weather.

Wind Proof Door.

Maximum Signaling Efficiency.

Unfogged Lenses.